

FUGRO

HI FLOW TYPE "C" HOT-STAB

Fugro's modified BS EN ISO 13628-8:2006 type C hot-stab profile and receptacle meets all standard requirements, long term immersion and maximum working pressures up to 5,000 psi. A hot-stab is used for creating a hydraulic connection with ROV or diver subsea.

The receptacle is machined from a single piece of super duplex stainless steel. It can be supplied with a weld stub to allow for the receptacle to be welded directly onto the clients' pipework or supplied standard with thread ports.

The single port hot-stab is machined from a single piece of copper nickel alloy. It features a specially designed handle that allows the hot-stab to easily engage with the receptacle.

The blind hot-stab is machined from a solid section of copper nickel alloy. The blind stab is pressurised retaining up to 15,000 psi working pressure.

The dummy stab and parking receptacle are non-pressure retaining manufactured from plastic, and provides a barrier to stop ingress of debris/marine growth to the receptacle or a readily accessible storage solution for a hot-stab, respectively.

BENEFITS

- Structural integrity – machined from single section
- Bespoke handle design to expedite receptacle engagement
- Reduced maintenance - dummy stab and parking receptacle design prevents ingress of debris and marine growth

HI FLOW TYPE "C" HOT-STAB

Technical Specifications

General

Size (high flow type c hot-stab)	420 mm x 70 mm x 110 mm (L x W x H)
Weight in air (high flow type c hot-stab)	3.5 kg (7.7 lb)
Weight in water (high flow type c hot-stab)	2.8 kg (6.2 lb)
Size (blind hot-stab)	420 mm x 70 mm x 110 mm (L x W x H)
Weight in air (blind hot-stab)	3.6 kg (7.9 lb)
Weight in water (blind hot-stab)	2.9 kg (6.4 lb)
Size (dummy hot-stab)	420 mm x 70 mm x 110mm (L x W x H)
Weight in air (dummy hot-stab)	1.1 kg (2.4 lb)
Weight in water (dummy hot-stab)	0.4 kg (0.9 lb)
Size (high flow type c hot-stab receptacle)	120 mm x Ø130 mm (L x W x H)
Weight in air (high flow type c hot-stab receptacle)	2.5 kg (5.5 lb)
Weight in water (high flow type c hot-stab receptacle)	2.1 kg (4.6 lb)
Size (parking receptacle)	120 mm x Ø130 mm (L x W x H)
Weight in air (parking receptacle)	0.5 kg (1.1 lb)
Weight in water (parking receptacle)	0.2 kg (0.4 lb)
* All sizes and weights with t-handle	
Design life	10 years (with maintenance)
Design depth	3000 MSW

Tool Supply (from ROV)

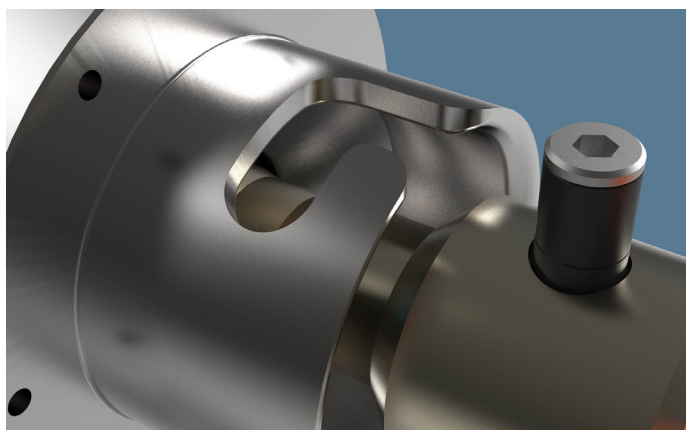
Maximum working pressure	689 bar (10,000 psi)
Recommended maximum working flow	200 litre/min (52.8 gpm)
Operating fluid	Hydraulic oil – iso 22/32

Tool Output

Interface	BS EN ISO 13628-8:2006 Type A
	API RP 17H:2013

Key Features

- Super duplex construction (high flow receptacle)
- Copper nickel alloy construction (blind hot-stab and high flow hot-stab)
- Enlarged apertures for greater flow rates
- Resistant to long term immersion in salt water



Hot-stab receptacle with j-lock



Hot-stab locking mechanism

