

FUGRO

1.5" SINGLE PORT TYPE "D" HOT-STAB

Fugro API RH 17H: 2013 Type 1.5" single port hot-stab profile and receptacle meets all standard requirements, long term immersion and maximum working pressures up to 5,000 psi. A hot-stab is used for creating a hydraulic connection with ROV or diver subsea.

The receptacle is machined from a single piece of super duplex stainless steel. It can be supplied with a weld stub to allow for the receptacle to be welded directly onto the clients' pipework or supplied standard with thread ports.

The single port hot-stab is machined from a single piece of copper nickel alloy. It features a specially designed handle that allows the hot-stab to easily engage with the receptacle.

The blind hot-stab is machined from a solid section of copper nickel alloy. The blind stab is pressurised retaining up to 5,000 psi working pressure.

The dummy stab and parking receptacle are non-pressure retaining manufactured from plastic, and provides a barrier to stop ingress of debris and marine growth to the receptacle or a readily accessible storage solution for a hot-stab, respectively.

BENEFITS

- Structural integrity – machined from single section
- Bespoke handle design to expedite receptacle engagement
- Reduced maintenance - dummy stab and parking receptacle design prevents ingress of debris and marine growth

1.5" SINGLE PORT TYPE "D" HOT-STAB

Technical Specifications

General

Size (type d 1.5" single hot-stab receptacle)	200 mm x Ø107 mm (L x D)
Weight in air (type d 1.5" single hot-stab receptacle)	7.9 kg (17 lb)
Weight in water (type d 1.5" single hot-stab receptacle)	6.9kg (15 lb)
Size (blind 1.5" single hot-stab)	210 mm x 85 mm x 200 mm (L x W x H)
Weight in air (blind 1.5" single hot-stab)	3.9 kg (8.6 lb)
Weight in water (blind 1.5" single hot-stab)	3.4 kg (7.5 lb)
Size (dummy 1.5" single hot-stab)	210 mm x 85 mm x 200 mm (L x W x H)
Weight in air (dummy 1.5" single hot-stab)	1 kg (2.2 lb)
Weight in water (dummy 1.5" single hot-stab)	0.6 kg (1.3 lb)
Size (parking 1.5" single receptacle)	200 mm x Ø107 mm (L x D)
Weight in air (parking 1.5" single receptacle)	0.9 kg
Weight in water (parking 1.5" single receptacle)	0 kg
Size (type d 1.5" single hot-stab)	210 mm x 85 mm x 200 mm (L x W x H)
Weight in air (type d 1.5" single hot-stab)	3.8 kg (8.4 lb)
Weight in water (type d 1.5" single hot-stab)	3.3 kg (7.3 lb)
Design life	10 years (with maintenance)
Design depth	3000 MSW

Tool Supply (from ROV)

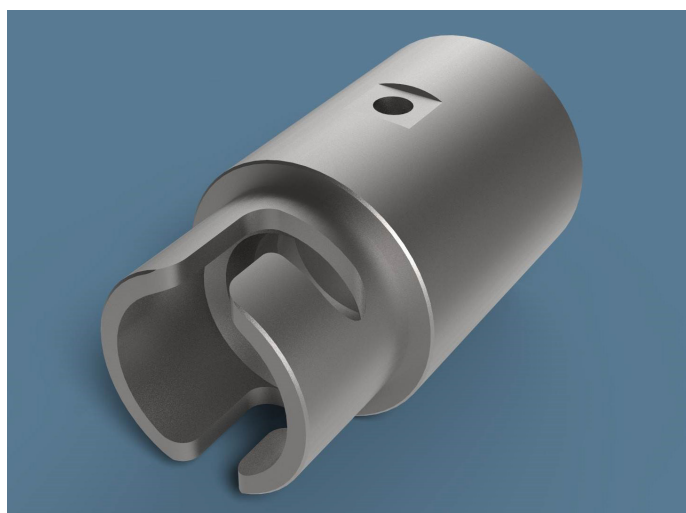
Maximum working pressure	345 bar (5,000 psi)
Recommended maximum working flow	400 litre/min (105.7 GPM)
Operating fluid	Hydraulic Oil – ISO 22/32

Tool Output

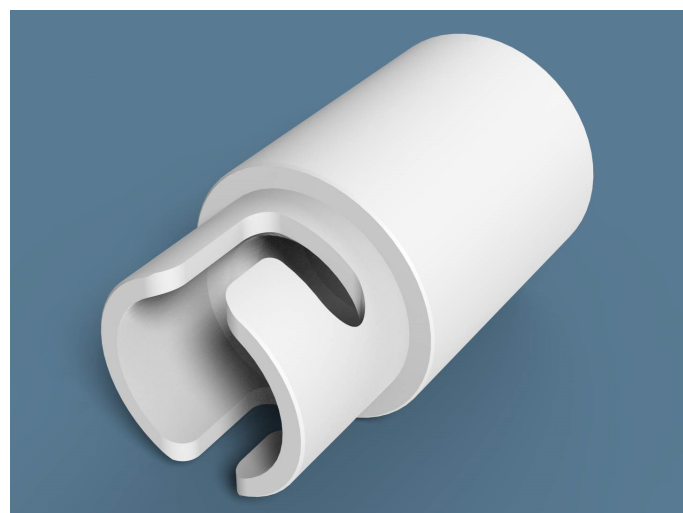
Interface	API RP 17H:2013
-----------	-----------------

Key Features

Super duplex construction (receptacle)
Copper nickel alloy construction (blind hot-stab and hot-stab)
Enlarged apertures for greater flow rates
Resistant to long term immersion in salt water



Hot-stab receptacle



Hot-stab parking receptacle

