

FUGRO

3.5" SINGLE PORT TYPE "D" HOT-STAB

Fugro API RH 17H: 2013 Type D 3.5" single port hot-stab profile and receptacle meets all standard requirements, long term immersion and maximum working pressures up to 5,000 psi. A hot-stab is used for creating a hydraulic connection with ROV or diver subsea.

The receptacle is machined from a single piece of super duplex stainless steel. It can be supplied with a weld stub to allow for the receptacle to be welded directly onto the clients' pipework or supplied standard with thread ports.

The single port hot-stab is machined from a single piece of copper nickel alloy. It features a specially designed handle that allows the hot-stab to easily engage with the receptacle.

The blind hot-stab is machined from a solid section of copper nickel alloy. The blind stab is pressurised retaining up to 5,000 psi working pressure.

The dummy stab and parking receptacle are non-pressure retaining manufactured from plastic, and provides a barrier to stop ingress of debris/marine growth to the receptacle or a readily accessible storage solution for a hot-stab, respectively.

BENEFITS

- Structural integrity – machined from single section
- Bespoke handle design to expedite receptacle engagement
- Reduced maintenance - dummy stab and parking receptacle design prevents ingress of debris and marine growth

3.5" SINGLE PORT TYPE "D" HOT-STAB

Technical Specifications

General

Size (type D 3.5" single hot-stab)	370 mm x 190 mm x 395 mm (L x W x H)
Weight in air (type D 3.5" single hot-stab)	34 kg (75 lb)
Weight in water (type D 3.5" single hot-stab)	30 kg (66 lb)
Size (blind 3.5" single hot-stab)	370 mm x 190 mm x 395 mm (L x W x H)
Weight in air (blind 3.5" single hot-stab)	35 kg (77 lb)
Weight in water (blind 3.5" single hot-stab)	31 kg (68 lb)
Size (dummy 3.5" single hot-stab)	370 mm x 190 mm x 395 mm (L x W x H)
Weight in air (dummy 3.5" single hot-stab)	5.7 kg (13 lb)
Weight in water (dummy 3.5" single hot-stab)	1.2 kg (2.6 lb)
Size (type d 3.5" single hot-stab receptacle)	350 mm x Ø259 mm (L x D)
Weight in air (type d 3.5" single hot-stab receptacle)	37 kg (82 lb)
Weight in water (type d 3.5" single hot-stab receptacle)	32 kg (71 lb)
Size (parking 3.5" single receptacle)	350 mm x Ø259 mm (L x D)
Weight in air (parking 3.5" single receptacle)	37 kg (82 lb)
Weight in water (parking 3.5" single receptacle)	32 kg (71 lb)
Design life	10 years (with maintenance)
Design depth	3000 MSW

Tool Supply (from ROV)

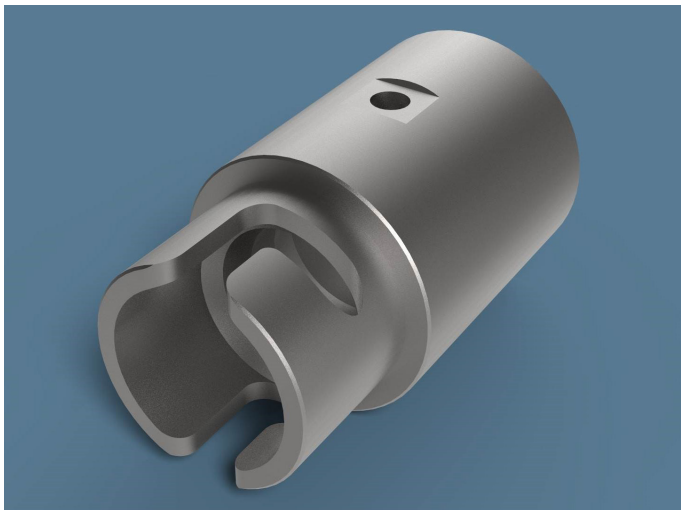
Maximum working pressure	345 bar (5,000 psi)
Recommended maximum working flow	400 litre/min (105.7 GPM)
Operating fluid	Hydraulic oil – ISO 22/32

Tool Output

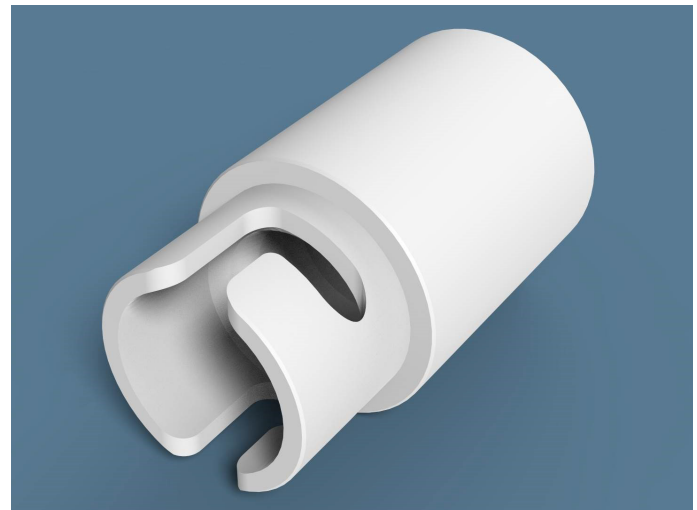
Interface	API RP 17H:2013
-----------	-----------------

Key Features

- Super duplex construction (receptacle)
- Copper nickel alloy construction (blind hot-stab and hot-stab)
- Enlarged apertures for greater flow rates
- Resistant to long term immersion in salt water



Hot-stab receptacle



Hot-stab parking receptacle

