

FUGRO

SINGLE & DUAL PORT TYPE B HOT-STAB

Fugro's ISO 13628-8:2006 type B single and dual port hot-stab profile and receptacle meets all standard requirements, long term immersion and maximum working pressures up to 5,000 psi. A hot-stab is used for creating a hydraulic connection with ROV or diver subsea.

The receptacle is machined from a single piece of super duplex stainless steel. It can be supplied with a weld stub to allow for the receptacle to be welded directly onto the clients' pipework or supplied standard with thread ports.

The single or dual port hot-stab is machined from a single piece of copper nickel alloy and features a specially designed handle that allows the hot-stab to easily engage with the receptacle.

The blind hot-stabs are machined from a solid section of copper nickel alloy. The blind stab is pressurised retaining up to 10,000 psi maximum working pressure.

The dummy stab and parking receptacle are non-pressure retaining manufactured from plastic, and provides a barrier to stop ingress of debris and marine growth to the receptacle or a readily accessible storage solution for a hot-stab, respectively.

BENEFITS

- Structural integrity – machined from single section
- Bespoke handle design to expedite receptacle engagement
- Designed for long-term immersion with reduced low maintenance requirements

SINGLE & DUAL PORT TYPE B HOT-STAB

Technical Specifications

General

Size (type b single/dual hot-stab)	420 mm x 60 mm x 100 mm / 500 mm x 60 mm x 100 mm (L x W x H)
Weight in air/water (type b single hot-stab)	3.7 kg (8.2 lb)/2.9 kg (6.4 lb)
Weight in air/water (type b dual hot-stab)	4.2 kg (9.3 lb)/3.3 kg (7.3 lb)
Size (blind single/dual hot-stab)	420 mm x 60 mm x 100 mm/ 500 mm x 60 mm x 100 mm (L x W x H)
Weight in air/water (blind single hot-stab)	3.8 kg (8.4 lb)/3 kg (6.6 lb)
Weight in air/water (blind dual hot-stab)	4.3 kg (9.5 lb)/3.4 kg (7.5 lb)
Size (dummy single/dual hot-stab)	420 mm x 60 mm x 100 mm/ 500 mm x 60 mm x 100 mm (L x W x H)
Weight in air/water (dummy single hot-stab)	1.1 kg (2.4 lb)/0.3 kg (0.7 lb)
Weight in air/water (dummy dual hot-stab)	1.3 kg (2.9 lb)/0.4 kg (0.9 lb)
Size (type b single/dual hot-stab receptacle)	110 mm x Ø120 mm/200 mm x Ø120 mm (L x D)
Weight in air/water (type b single hot-stab receptacle)	2.5 kg (5.5 lb)/2.1 kg (4.6 lb)
Weight in air/water (type b dual hot-stab receptacle)	3.5 kg (7.7 lb)/3.1 kg (6.8 lb)
Size (parking single/dual receptacle)	110 mm x Ø120 mm/200 mm x Ø120 mm (L x D)
Weight in air/water (parking single receptacle)	0.5 kg (1.1 lb)/0.2 kg (0.4 lb)
Weight in air/water (parking dual receptacle)	1 kg (2.2 lb)/0.5 kg (1.1 lb)
* All sizes and weights with t-handle	
Design life	10 years (with maintenance)
Design depth	3000 MSW

Tool Supply (from ROV)

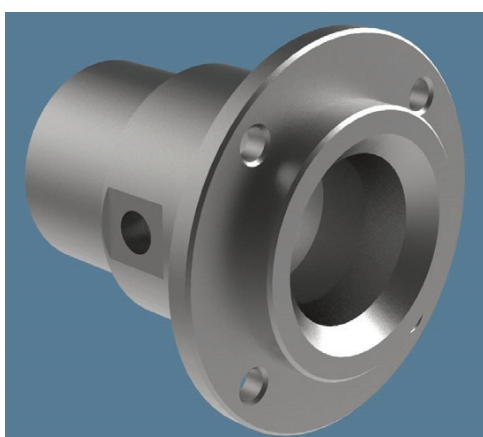
Standard working pressure	689 bar (10,000 psi)
Test pressure	1034 bar (15,000 psi)
Recommended maximum working flow	10 litre/min (2.6 GPM)
Operating fluid	Hydraulic Oil – ISO 22/32

Tool Output

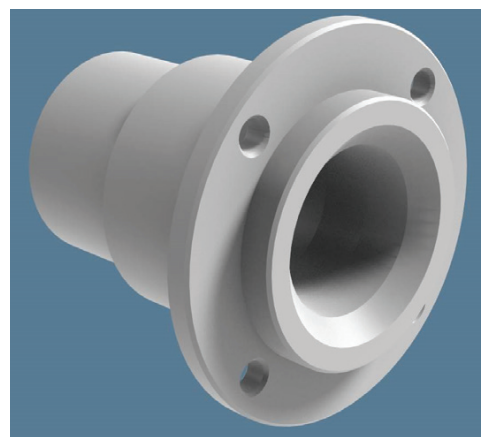
Interface	BS EN ISO 13628-8:2006 Type B API RP 17H:2013
-----------	--

Key Features

- Super duplex construction (receptacle)
- Copper nickel alloy construction (blind hot-stab and hot-stab)
- Resistant to long term immersion in salt water



Multi-bore cleaning clusters



Cleaning tool on hub

